



# Youth Crime Prevention Report

Commissioned by Integrated Youth Support Services,  
North Devon

By Marian McCaie  
Published June 2009

Introduction to report .....	3
Background to the project .....	3
Aims and Objectives .....	3
Crime and YASB summary .....	3
Youth Anti-Social Behaviour .....	4
Timing.....	5
YASB Anecdotal Data.....	5
Youth Crime .....	7
Time of Year.....	11
Age.....	11
Factors influencing likelihood to offend.....	11
General Provision .....	12
Positive activities.....	12
Targeted provision.....	12
Childcare.....	12
Timing.....	12
Age Groups.....	12
Type of provision.....	13
Comparison of Provision and Youth Crime Hotspots .....	13
General.....	13
By Ward .....	14
Provision for 2009 .....	15
Dance In Devon .....	15
Early Years and Childcare and Extended Services .....	15
NDDC Super Sports.....	15
PLAY: .....	15
TDC Summer Sports .....	16
WINGS: .....	16
Youth Service: .....	16
Extended Services Provision.....	16
Bideford.....	16
Braunton.....	16
Chulmleigh.....	17
Holsworthy.....	17
Ilfracombe.....	17
South Molton.....	17
Torrington .....	17

General Provision .....	17
Consultation .....	18
Results based on literary review .....	18
A Summary of Key Findings .....	18
Recommendations .....	19
Strategic .....	19
Responsible body .....	20
Regular reports identifying change in trends .....	20
Funding .....	20
Partnership working .....	21
Marketing and Communication: .....	22
Detailed consultation: .....	22
Free or Low cost provision.....	23
Risky Activities .....	23
Weekend and evening opening hours .....	24
Activity Providers to join the VCR.....	24
Targeted mobile provision to tackle youth crime and YASB.....	24
Geographically Specific Recommendations .....	25
Summer Holiday Provision for 8-12s in Bideford.....	26
Further investigation into, and providing of, intervention activities for 8-18s in Bideford South .....	28
Summer Holiday Provision for 8-12s in Ilfracombe .....	29
Targeted activities for 12-18s in Ilfracombe Central and Ilfracombe West.....	31
Recommendations for Lower Priority Areas .....	32
Universal Provision for Newport .....	32
Provision for young people in South Molton: .....	32
Provision for Pilton.....	33
Part 2 Appendices (see embedded document) .....	34

## **Introduction to report**

This report identifies youth crime and youth anti-social behaviour (YASB) hotspots. In this report the term 'youth crime hotspot' is an area, usually a ward, in which there is a relatively high level of youth crime and/or YASB. A crime or anti-social behaviour act is considered as youth crime or YASB when the perpetrator is believed to be aged between 10 and 18 years old.

This report focuses on the level of summer holiday provision for 8-18 year olds in youth crime hotspots. For this report, the term 'summer holidays' refers to the school summer break, which is usually six weeks long, beginning from mid to late July and finishing late August or the beginning of September. The definition of 'provision' is flexible and includes sports and arts clubs, uniformed groups, childcare, play-schemes, fun-days, adventure camps and youth clubs.

This report identifies factors that deter or inhibit young people from accessing provision, practices that limit providers' ability to maximise their resources and issues hindering the implementation of youth crime prevention strategies.

## **Background to the project**

A group of partner agencies, responsible for youth crime prevention, concluded that there was insufficient information available to them to identify areas of need. This made it difficult to target resources that would enable additional holiday provision to be provided. In order to identify areas of need it proved necessary to map youth crime hotspots against existing levels of provision. Consequently, this piece of work was commissioned by Safer North Devon to provide the information needed.

## **Aims and Objectives**

The purpose of the report is to inform the relevant agencies and providers of the spread of provision and youth crime, and furthermore to encourage the development of a co-ordinated, consistent and targeted approach to holiday activities.

The purpose of this approach to holiday activities is to reduce First Time Entrants into the criminal justice system (FTEs), youth crime incidents and YASB, especially in youth crime hotspots.

## **Crime and YASB summary**

The crime and YASB hotspots are Bideford East, Bideford South, Central Barnstaple, Forches and Whiddon Valley, Ilfracombe Central, Ilfracombe West, Newport, Northam, Pilton, South Molton, Torrington and Yeo Valley. Of these, Bideford South, Central Barnstaple, Forches and Whiddon Valley, Ilfracombe Central and Yeo Valley have the most severe problems, and are ranked 1-3 in two or more of the following tables.

Youth crime decreases in the summer, although YASB increases.

## Youth Anti-Social Behaviour

*Table of Wards in descending order, ranked by the number of residents aged between 10 and 18 entering and/or moving up the escalation process in that ward between 1<sup>st</sup> April 2007 and 31<sup>st</sup> December 08.*

District	Rank	Ward	No. incidents
North Devon	1	Ilfracombe Central	38
Torrige	2	Bideford South	26
North Devon	3	Forches and Whiddon Valley	22
Torrige	4	Bideford East	21
North Devon	5	Ilfracombe West	19
Torrige	6	Northam	16
North Devon	7	Yeo Valley	15
North Devon	9	Fremington	12
Torrige	11	Holsworthy	9
North Devon	11	South Molton	9
Torrige	11	Torrington	9

This table shows the residency of the offender and not the place of the offence.

This data is based on the escalation process records kept by the district ASB co-ordinator.

Written warnings, Letter 1s, Letter 2s, anti-social behaviour contracts (ABCs), breach of ABCs and anti-social behaviour orders (ASBOs) are counted as incidents. Verbal warnings are counted where they have been recorded. ABC or ASBO adjustments are not counted as incidents because often an adjustment is not prompted by an ASB act.

The hotspots are not directly indicative of the areas in which the most perpetrators of ASB live, because a single individual may be counted twice, if within the period they are moved up the escalation process.

There were 11 incidents for which no address, or an incomplete address, was available. Therefore they are not included in the above table.

*Table of LSOA's in descending order, ranked by the number of Youth Anti-Social Behaviour offences committed in that LSOA between 1<sup>st</sup> April 2007 and 31<sup>st</sup> March 2008.*

District	Rank	LSOA Name	Ward	Incidents
North Devon	1	North Devon 008A	Central Town	167
North Devon	2	North Devon 001B	Ilfracombe Central	85
Torrige	3	Torrige 003C	Bideford North	81
North Devon	4	North Devon 010B	Forches and Whiddon Valley	76
Torrige	5	Torrige 004E	Bideford South	70
Torrige	6	Torrige 003A	Bideford North	69
North Devon	7	North Devon 010E	Newport	67
North Devon	9	North Devon 003A	Ilfracombe Central	66
North Devon	9	North Devon 010C	Forches and Whiddon Valley	66
North Devon	9	North Devon 008D	Yeo Valley	66

This data is taken from Clive Cotton's report, 'Youth ASB Profile V5'.

The hotspots are the lower super output areas (LSOAs)<sup>1</sup> in which the highest number of YASB acts were logged as occurring.

There is an element of subjectivity in both the recording of YASB and the extraction of YASB data from ASB data.<sup>2</sup>

### Timing

Clive Cotton's report shows that in North Devon the peak months for YASB are April, July and August. In Torrige, the peak months for YASB are May, July and August. Both districts show an increase during the summer holiday months.

The report notes an average increase of 41.4 % of incidents on non-school days across the county.

On both school days and non-school days, the most incidents occurred between 6 p.m. and 9 p.m., followed by the time period 9 p.m. and 12 a.m.

### YASB Anecdotal Data

There is a rise in the number YASB acts logged in Ilfracombe sea-front area (Ilfracombe Central Ward) during the summer holidays, partly as a result of Skateboarding and hanging around the Landmark. It is difficult to establish whether this is perceived or actual YASB.

<sup>1</sup>An LSOA has between 1000 and 3000 people living in and an average population of 1500 people.

<sup>2</sup> For more information regarding this, please see 'Youth ASB Profile V5', p.3.

In Bideford South Ward, YASB, both the residency of offender and place of incident, is largely centred around Bowden Green and Pynes Lane.

In Ilfracombe Central, the residency of offenders is largely centred around Princess Avenue and Queen's Avenue.

## Youth Crime

*A table showing the wards, arranged in descending order, according to the total number of crimes committed by residents of that ward for 2008 and 2007*

District	Rank	Ward	No. Of incidents
North Devon	1	Yeo Valley	236
North Devon	2	Forches and Whiddon Valley	195
North Devon	3	Newport	130
Torridge	4	Bideford South	110
North Devon	5	Ilfracombe Central	105
North Devon	6	Central Barnstaple	86
Torridge	7	Bideford East	78
North Devon	8	Pilton	73
North Devon	9	Braunton West	72
North Devon	10.5	Ilfracombe West	59
Torridge	10.5	Northam	59

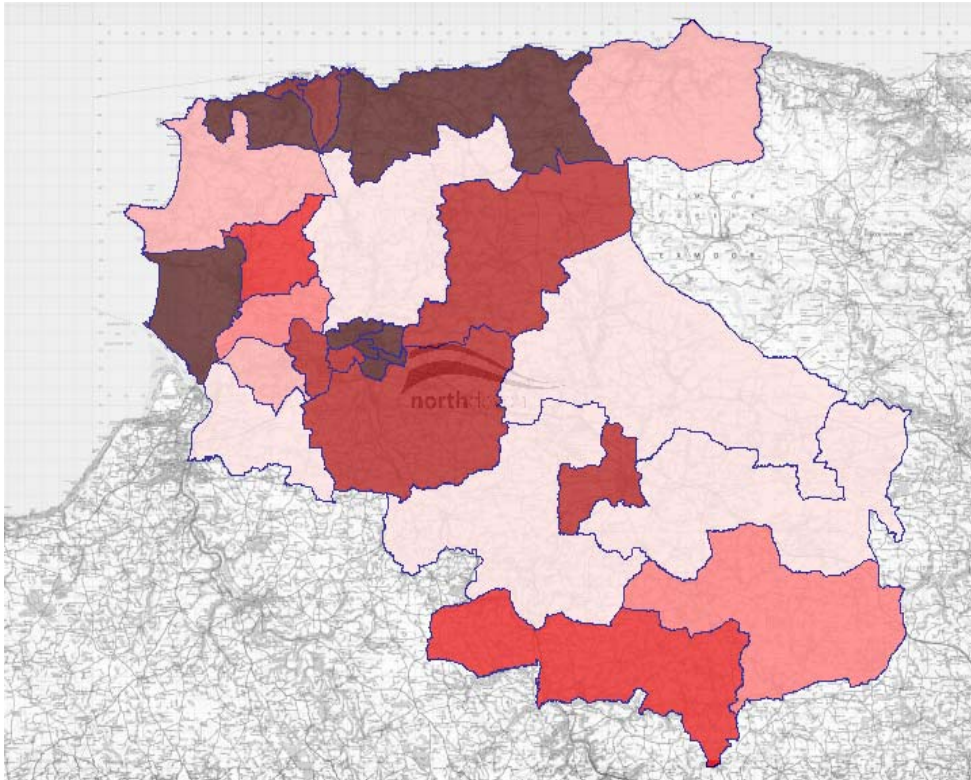
This data has been collected from the Youth Offence Team, and their data comes from the Youth Justice Board.

The ward is the residency of the offender and not the place of the incident.

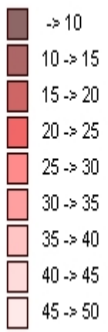
Each crime is counted as an incident, and therefore, this data does not represent the number of resident offenders in a ward.

In 2007, almost half of Newport's crimes were committed by a resident or residents of a single postcode.

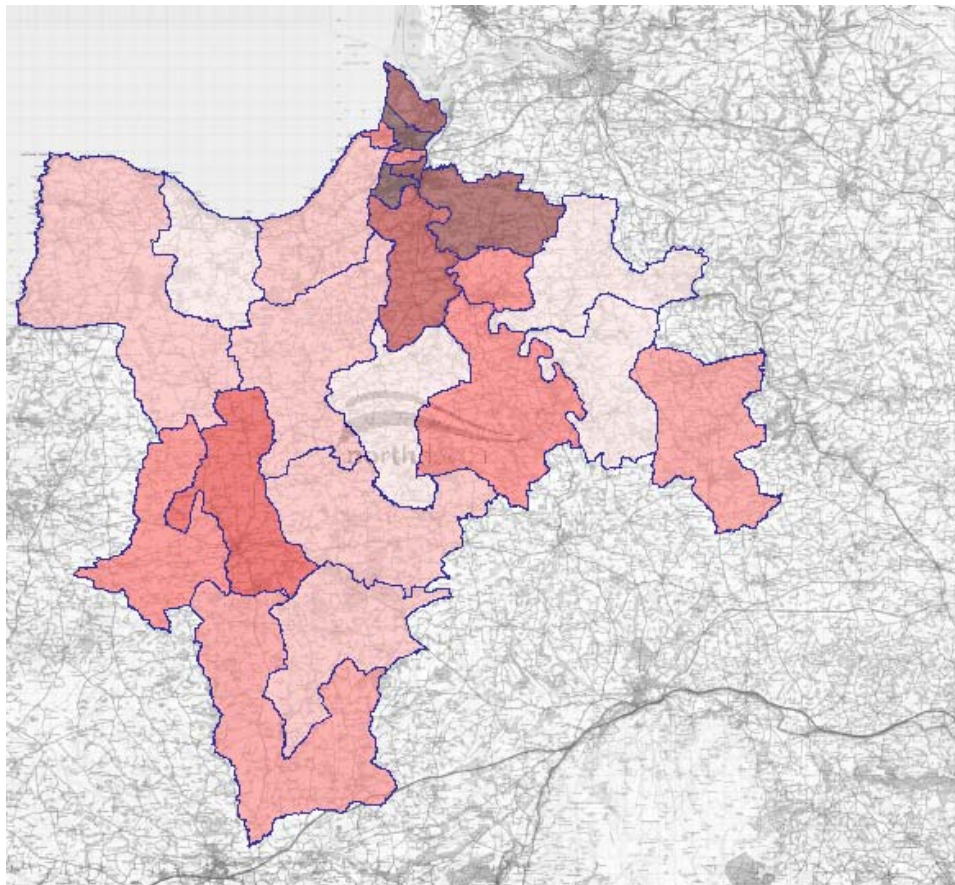
**A Map of North Devon showing the number of crimes committed by residents of that ward in 2008 as ranked in the above table**



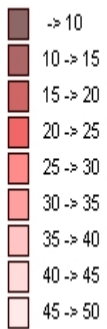
**Youth Crime Ranks**



**A Map of Torrridge showing the number of crimes committed by residents of that ward in 2008 as ranked in the above table**



**Youth Crime Ranks**



***A table showing the number of First Time Entrants aged between 10 and 18, by ward for 2008.***

Rank	District	Ward	No. Of FTEs
1	North Devon	Ilfracombe West	14
3	North Devon	Central Town	11
3	North Devon	Pilton	11
3	North Devon	Yeo Valley	11
5.5	North Devon	Forches and Whiddon Valley	10
5.5	North Devon	Ilfracombe Central	10
7.5	North Devon	Newport	9
7.5	Torrige	Northam	9
9.5	Torrige	Bideford East	8
9.5	North Devon	South Molton	8

The ward is the young persons' place of residency.

***A table showing the number of First Time Entrants aged 10-18 for 1<sup>st</sup> April 2006 and 31<sup>st</sup> December 2007***

Rank	District	Ward	No. Of FTEs
1	Torrige	Bideford South	32
2	North Devon	Forches and Whiddon Valley	29
3	Torrige	Bideford East	28
4	North Devon	Yeo Valley	27
5	Torrige	Torrington	19
6	North Devon	Combe Martin	18
7	North Devon	Central Town	17
8	North Devon	Ilfracombe East	16
9.5	North Devon	Bickington and Roundswell	15
9.5	North Devon	Ilfracombe Central	15

The ward is the young persons' place of residency.

## Time of Year

In 2006, 2007 and 2008 there was no rise in the number of crimes committed by youths during the summer holidays in North Devon. Torrridge saw a rise in 2007 only.

District	Year	Number of youth crimes in year	Number of youth crimes in summer holidays	Average number per week for the whole year	Average number per week for summer holidays
North Devon	2008	547	56	10.5	9.3
North Devon	2007	717	71	13.8	11.8
North Devon	2006	546	50	10.5	8.3
Torrridge	2008	183	16	3.5	2.7
Torrridge	2007	338	47	6.5	7.8
Torrridge	2006	232	21	4.5	3.6

In 2008 in North Devon there was a rise in the number of FTEs between July and September, but in Torrridge this period showed a drop.

The wards with the youth residents committing the most crimes during the summer holidays are:

Summer 06: Yeo Valley and Newport, Bideford South and Torrington.

Summer 07: Yeo Valley and Central Town, Bideford South and Northam.

Summer 08: Yeo Valley and Forches and Whiddon Valley, Tamarside and Northam.

## Age

The largest proportions of FTEs are aged 15 or 16, and only 6% of FTEs are aged 10 or 11. However, in areas of deprivation, a higher proportion of the FTEs in that ward or LSOA are aged 10-13 compared to less deprived areas.

## Factors influencing likelihood to offend

According to Clive Cotton's report, FTEs' self-analysis demonstrates that the factors or categories that have the strongest influence, and were most frequently cited as influences, are: "thinking and behaviour", "family and personal" and "lifestyle".

## **General Provision<sup>3</sup>**

### **Positive activities**

Overall, the level of positive activities available in the summer dropped slightly in 2006, 2007 and 2008, because many uniformed groups and church-based youth groups are term-time only. In addition, most extended schools activities<sup>4</sup> discontinue and the Youth Service close for two weeks. However, to balance this out some sports clubs are open and there are additional, drop-in sports sessions at clubs and schools, as well as a few summer camps across the districts. TDC (Torridge District Council) and NDC (North Devon Council) run summer holiday sports programmes.

### **Targeted provision**

Targeted provision is provision which works with identified or referred young people, and at least some aspect of that provision is not open to all members of the public. Targeted provision does not decrease during the summer holidays. The groups who work with identified young people continue to do so during the summer holidays, and some groups take advantage of the extra-time to further their engagement with young people's development.

### **Childcare**

Excepting Chulmleigh, there is some formal childcare provision in all Learning Communities during the summer holidays for 8-14 year olds.<sup>5</sup> In some Learning Communities there is a slight increase in the amount of childcare available during the summer holidays for this age group, as nurseries open their doors to older children. However, for those not able to use working tax credits, this is expensive, and the Childcare Sufficiency Audits for Northern Devon suggest that young people would rather participate in activities or youth groups than access formal childcare.

### **Timing**

Excepting sports clubs, there is comparatively little weekend provision both in the summer holidays and year round, considering this is when young people have no compulsory schooling.

### **Age Groups**

There is little free or low-cost provision for the 8-12 age range that did not require adult or guardian accompaniment. For the purposes of this research 'low cost' is considered £2 or less per session (i.e. dance lesson), or when paid annually, £50 or less. (i.e. membership to football club). The cost of required equipment or clothing has not been taken into account.

---

<sup>3</sup> For a list of fetes and festivals open to young people see appendix C. For a full list of clubs and activity providers see appendix D.

<sup>4</sup> Extended services in and around schools is an initiative to enable schools to fulfil the five criteria set out in the Every Child Matters paper.

<sup>5</sup> A learning community is a cluster of schools and the boundary includes the catchment areas of the schools that make up the learning community. There are eight learning communities in North Devon and Torridge; they are Barnstaple, Bideford, Braunton, Chulmleigh, Holsworthy, Ilfracombe, Torrington and South Molton.

In the summer holidays there was some free provision for this age group in Barnstaple (Gorwell and Forches) Bideford (North and East), Braunton, Ilfracombe (Central and Lynton) and South Molton Learning Communities. Torrington had a low cost sports programme accessible to this age group.

There is little formal childcare for 14 years and over, however, this may not be in demand. Youth clubs provide some provision for the over 12s, however, this is often on a weekday evening, and the amount of drop-in day-time provision is fairly limited. The day-time provision the Youth Service operates often takes the form of trips, and therefore capacity can be an issue.

### **Type of provision**

There is little youth work engagement with primary school-aged children. Much of the low-cost and free provision is uniformed and/or non-secular. Some sports clubs are low-cost, but these tend to be membership clubs.

## **Comparison of Provision and Youth Crime Hotspots**

### **General**

There is no inverse correlation between the level of provision and the level of youth crime and YASB. This means that often a high-level of provision is needed where there is a high level of youth crime and YASB.

Three possible reasons for this are:

Firstly, the base level of crime is high, and so although provision leads to a drop in crime-levels, the area remains a hotspot.

For example, Yeo Valley and Forches and Whiddon Valley Wards have relatively high levels of crime despite having some free or low cost provision, targeting the at-risk young people, in addition to youth clubs and membership groups. This is *not* to say that providing opportunities for positive activity causes crime and cannot help reduce crime. High-levels of crime, the density of the population and deprivation-levels led to positive activities for young people being provided.

These have led to a decrease in youth crime. GOYA began working in Yeo Valley in 2002 and Georgie's (a Youth Service run youth club based in Yeo Valley) opened in 2007. Despite a peak in 2007, the number of offences committed by residents of this ward dropped between from 101 in 2006 to 79 in 2008. GOYA cite that the number of FTEs living in Gorwell and Frankmarsh fell by 64% after their programme began.

Secondly, the provision may not be engaging with the target group as a result of not being appropriate, or not being accessible.

For example, Bideford South and Ilfracombe central are youth crime hotspots despite having many membership clubs and some holiday schemes. However, the

type of provision is not led by the needs of the target group and may not be suited to their interests, be too expensive or require transport for some sessions.

Thirdly, low-levels of provision often correlate with low-levels of crime, for example in rural areas. However, this usually corresponds with a small youth population.

### **By Ward**

Despite provision reducing the number of FTEs in Yeo Valley and Forches and Whiddon Valley Wards, they continue to be hotspots for youth crime and YASB. Therefore, the current level of universal and targeted provision is necessary.

Bideford South (Pynes area and Bowden Green), Northam, Newport, Pilton and Ilfracombe Central and West emerge as areas that currently have a disproportionately low-level of appropriate, semi-targeted, preventative provision in relation to the level of youth crime and youth anti-social behaviour.

Bideford South, Ilfracombe central, Newport and Pilton have a fairly high number of membership clubs.<sup>6</sup> These appear to be failing to engage with the at-risk children because of cost, provision-type or lack of marketing/active-targeting.

---

<sup>6</sup> See appendix E

## **Provision for 2009**

Unless stated, activities or camps that run every year or are already running, such as childcare providers, have not been included in this list. For a fuller picture, this list should be compared to appendix D.

### **Dance In Devon**

They will be running dance classes for those who would not usually engage in dance, possibly in conjunction with Extended Services, the Youth Service and NDDC provision. Currently, Dance in Devon is planning to work in Central Bideford, Barnstaple and Combe Martin with over 13s.

### **Early Years and Childcare and Extended Services**

They have allocated £10,000 to be spent on positive activities for 8-12 year olds in Bideford South and Ilfracombe Central. There is £5000 for each ward, and providers can bid for the money.

### **NDDC Super Sports**

NDDC are running a similar summer holiday programme to the one they ran in 2008, which covers the whole district.

The programme is likely to include some GOYA run football sessions in Slade.

Information regarding wrap-around childcare will be disseminated to activity centres, and they can then advise parents about childcare providers that are willing to drop-off and pick-up children from an activity.

### **PLAY:**

All PLAY activities are free, drop-in activities run by the various providers listed below. They are funded through the Big Lottery Grant, and the projects were chosen and are being overseen by the respective district councils.

CASP are running play-days in rurally isolated areas in Northern Devon for children aged 5-13 years. In Torridge, they are concentrating their time in and around Holsworthy.

Seize-the-moment are working in Northam, Appledore (a regular youth club night may be formed there), Westward Ho!, Swimbridge and Landkey, Croyde and Georgeham, Lynton and Lynmouth and Combe Martin. They will be providing universal provision for 13-19 year olds.

Barnstaple Museum is running activities for early teens, mainly in the museum and on Barnstaple square.

Inside Outreach (The Plough Arts Centre) are running arts workshops at the Plough Arts Theatre and in rural Torridge for 5-19 year olds during the school holidays.

Torridge Special Friends are running play sessions for disabled young people and their siblings in Torridge.

## **TDC Summer Sports**

TDC are running a similar programme to the one they ran in 2008. It will cover the whole district during the summer and Easter school-holidays.

TDC will no longer be running Christmas and half-term holiday activities.

TDC are looking to run some forest schools sessions.

The approximate costing of activities is £100 for 1 week of provision, 9 am-4 p.m.

TDC is joining the Voluntary Childcare Register (VCR). An activity provided by a club or organisation that is listed on the VCR can count towards childcare. Consequently, the parent or guardian can claim back part of the cost of the activity by using working tax credits.

## **WINGS:**

Wings will be running UNO, a positive activity programme working with referred at-risk, young people, concentrating on progression and development rather than diversion.

WINGS are organising weekend sports, e.g. cricket and football. This will be universal provision for over 12 s and will focus on Bideford, possibly with trips to Northam.

## **Youth Service:**

The youth service will be continuing the year-round programme, which is approximately 4 nights of provision per week.

They will be running some day trips, perhaps weekends, 2-3 per week, for approximately 12 young people.

The youth service will be closed for the last two weeks of the summer holidays.

## **Extended Services Provision**

### **Barnstaple**

Arts activities at Pilton School.

Possibly supporting some activities at rock park.

Places available free or at a subsidised cost for pupils accessing free school meals on the supersport programme.

Activities at Lampard for 12 days in Summer.

18 Forest School sessions running at Goodleigh for 5-11 years at £3 per person per session. Looking to run pilot sessions for 11 years and over and 5 years and under.

### **Bideford**

Possibility of running arts workshops in conjunction with the Youth Service; primary school clusters are to run activities, and local clubs are being encouraged to run taster sessions.

### **Braunton**

Neil Harris is planning to run activities programme from the secondary school, all day, Monday-Friday, 6 weeks, for 5-16 year olds.

### **Chulmleigh**

Extended service co-ordinator recently appointed, designing a summer programme is a priority of the Learning Community. Working with NDDC to provide biking and dance.

### **Holsworthy**

Marketing local activities and running sports sessions at the secondary school.

### **Ilfracombe**

Ilfracombe Family Centre to run fun-days for primary school aged children, and many sporting activities will be available at a low cost for young people living in Ilfracombe, Combe Martin and Lynton.

### **South Molton**

Extended service co-ordinator recently appointed, designing a summer programme is a priority of the learning community. Working with NDDC to provide biking and dance.

### **Torrington**

A low cost sports programme to run at the Secondary School.

### **General Provision**

Early Years and Childcare are encouraging and supporting providers of activities to join the VCR. There is ongoing discussion between Early Years and Childcare and Youth Service regarding the providing of 'a safe place to be'. A 'safe place to be' is term for informal childcare for secondary school-aged children.

Aim Higher is currently organising or funding projects which raise young people's aspirations, and encourage them to enter further education. Aim Higher is currently working in partnership with NDDC on Devon Games to Inspire, which will be held in Barnstaple.

ASDA is running 'free sports for kids'; ASDA be giving away vouchers that allow the young person attend a sports session for free.

**Barnstaple:** Rock Park skate-park is expected to open in April, possibly with a youth shelter nearby. North Devon Homes and Forches Community Association have recently appointed a full time youth worker. There is ongoing discussion surrounding a youth club in Landkey. Transport for some young people from Landkey to Georgies has been arranged.

**Bideford:** A new college with better sports facilities is being built. A skate-park in Appledore is being refurbished. A Soccer Safe programme is running, which aims to engage with at-risk young people, leading-up to a tournament.

**Braunton:** Will Newton is hoping to run Bikeability sessions, probably from 9 am-3pm at a fairly low cost.

**Chulmleigh:** Devon Discovery is looking to run Bush Craft sessions for young people at the Wembworthy Centre, near Chulmleigh.

**Ilfracombe:** VERVE (a youth club run by Young Devon) is set to open by summer 09. A Skate-park is expected to open by the end of the year.

**South Molton:** footballs in the community days have been planned.

**Torrington:** The Police Community Support Officers (PCSOs) are in the process of organising American Football practices.

## **Consultation**

### **Sources of Consultation:** <sup>7</sup>

Informal consultation: interviews have been carried out with people working with young people or in the youth sector.

External Sources: PEDPASS consultation, CASP consultation, Parish Plan consultation, P.A.N.D.A. (Play Activities in the North Devon Area) consultation, Childcare Sufficiency Audits, The Neighbourhood Initiative consultation, Tarka Housing youth consultation.

### **Overview of results from consultation:**

The preferred activities of young people were sports, hanging-out and music. The most popular sporting activities were team sports and water sports. The most frequently cited hurdles to accessing provision were transport, cost and knowledge about what's going-on.

## **Results based on literary review**

**Background Papers:** *Aiming High for Young People: a ten year strategy for positive activities*, HM Treasury, July 2007, *The Benefits of Play and Playwork: recent evidence-based research (2001-2006) demonstrating the impact and benefits of play and playwork*, Beth Waring and Chris Taylor, published by Skills Active, (2007). *Devon Childcare Sufficiency Assessment*, March 2007. *Devon Youth Offending Service First Time Entrants 1<sup>st</sup> April 2006-31<sup>st</sup> December 2007*, Clive Cotton, March 2008. *Engaging Young People: Local Authority Youth Work 2005-08*, Ofsted, March 2009, *Every Child Matters*, the Green Paper, 2003. Extended Services Audits for Barnstaple, Bideford and Ilfracombe. *Tired of Hanging Around: using sport and leisure activities to prevent anti-social behaviour by young people*, Audit Commission, Audit Commission Publishing Team, (2009). *Youth ASB Profile 1<sup>st</sup> April 2007-31<sup>st</sup> March 2008*, Clive Cotton and Corrine Tuck, 9 September 2008), *Youth Crime Action Plan*, HM Treasury, July 2008, *Youth Matters Green Paper*, July 2005.

## **A Summary of Key Findings**

Provision and positive activities contribute towards and affect two of the factors or categories that FTEs perceived as influencing their likelihood to offend, 'thinking and behaviour' and 'lifestyle'.

Young people that participated in structured, positive activities we less likely to offend in later life.

---

<sup>7</sup> For details see appendix A.

Research shows that play is fundamental to the well-being and healthy development of young people. Regarding play deprivation, Chris Taylor and Beth Waring write:

If normal play experiences are absent throughout a child's life, that child is more likely to become highly violent and anti-social regardless of demography.<sup>8</sup>

Play involving some level of risk and decision making, such as outdoor activities, can be instrumental in developing the capacity to self-monitor behaviour and deal with risky situations. The Public Health White paper states:

Taking risks, experimenting and pushing boundaries is an important part of growing up. Young people need opportunities to learn about their world in ways that provide challenging and excitement through positive things to do and opportunities to play.

One report observes that out-of-school provision has positive effects on communities.

Communities were seen to benefit from the development of citizenship. Out-of-school care was an alternative to anti-social-behaviour through the social inclusion of families and stronger links between families and the community.<sup>9</sup>

## Recommendations

### Strategic

#### Data collection:

a) **Recommendation:** The responsible body need to advise relevant agencies in order to ensure that *where possible* crime data and ASB data, including data concerning the escalation process, is captured and logged with a postcode indicating the residency of the offender and the place of the offence.

**Reason:** Postcodes are entered in a commonly adopted format, and allow for the development of specific responses to neighbourhoods. They can be aggregated up to LSOA.

b) The data should be centrally collated in a sophisticated enough way to allow filtered searches to be carried out.

**Reason:** This would enable quick and easy analysis at a local and a strategic level, allowing corresponding factors to be identified which could help to provide targeted solutions to specific problems. This information would only be used by a nominated party and would not be freely available to all.

---

<sup>8</sup> 'The Benefits of Play and Play work' (2007).

<sup>9</sup> Blake Stevenson Ltd., 'Assessment of the Benefits and Costs of Out of School Care' (2003).

c) It is recommended that where possible Youth crime and YASB are mapped by LSOA in addition to ward and parish.

**Reason:** An LSOA is a meaningfully sized area but does not face the same confidentiality issues which releasing information by postcode does, and therefore data sharing would be facilitated.

d) A structure or service needs to be put in place so that youth crime data and consultation are made accessible and easy to share with agencies working with young people. Equally, the responsible body needs to ask and support the agencies working with young people to share information and consultation.

Method: consultation finder. Consultation finder is an online database on which the results of consultations can be stored and shared.

**Reason:** Sharing data with providers may enable them to draw down additional funding, and audit projects more easily. Sharing consultation may help prevent duplication of work, and access to this consultation may help to inform decisions regarding provision.

#### **Responsible body**

ASB Steering group to over-see and steer data collection of ASB and youth crime, supported by the link officer of the Integrated Youth Support Services (IYSS). IYSS to oversee the development of information sharing practice.

#### **Regular reports identifying change in trends**

a) **Recommendation:** It should be requested that the Devon Strategic Partnership (DSP) produce an annual/quarterly report, which identifies any change in young offending trends, particularly the geographical spread of youth crime and YASB.

**Reason:** To ensure that IYSS and NDCT receive up-to-date information, which would enable these groups to react to changes in need by re-distributing or commissioning provision.

**Responsible Body:** IYSS to request this report is produced.

#### **Funding**

a) **Recommendation:** Funding for summer holiday activities needs to be committed by April 1<sup>st</sup> at the latest.

**Reason:** Late funding means that provision cannot be planned in advance, which results in money not being spent effectively, a lack of co-ordination across districts, resources, such as staff and venues, becoming unavailable, consultation with those targeted/affected being cut short or not done and opportunities for promotion becoming minimal.

b) All funding streams should be explored by recognising and utilising the potential of over-lapping objectives.

**Reason:** Every Child Matters recognises that issues surrounding the well-being of a child cannot be tackled in isolation, because each factor has a knock-on effect on the others. Positive activity projects should follow this integrated methodology, and in doing so can maximise their potential funding.

c) Services' shared priorities for action need to be agreed by the Integrated Youth Support Services (IYSS).

**Reason:** to avoid duplication of work and help identify sources of funding.

**Responsible bodies:**

The Northern Devon Children's Trust (NDCT) and the IYSS are to decide who the responsible body is, and link to the ASB theme Steering group.

**Partnership working**

a) **Recommendation:** A framework needs to be put in place, implemented and supported to facilitate consistent communication and co-ordination between the organisations that work with young people across Northern Devon. This framework should aim to facilitate information exchange at a local, district-wide and county level, and between the county, district and local levels. In areas of good practice, the responsible body needs to ensure the successful method of communication is rolled-out across the districts to ensure consistency.

Example: Northern Devon Children's Trust and Stakeholders Forum feeding to a multi-agency meeting in *all* learning communities.

**Reason:** to plan and implement youth crime prevention there is a need for information to have both detail and breadth. Localised meetings have the knowledge and contacts to implement district, countywide or countrywide strategy in a relevant and effective manner.

b) The responsible body need to ensure that there is cross-district communication and co-ordination between all providers of positive activity opportunities, including extended service co-ordinators, the voluntary sector, district council sports officers and the youth service.

**Reason:** to avoid duplication, ensure appropriate distribution of provision and to open-up opportunities for creative, partnership working.

**Responsible bodies:** IYSS to oversee this, with the possibility of Extended Services Co-ordinators facilitating local delivery through supporting or setting-up multi-agency or holiday activity meetings where necessary.

### **Marketing and Communication:**

a) **Recommendation:** There is a need to develop a co-ordinated and unified cross-district summer holiday positive activities marketing strategy, which is informed by local knowledge and expertise. For example, asking Neighbourhood Beat Managers, to advise and implement aspects of the strategy.

**Reason:** In the past, the spread of information has been patchy and providers' attempts to engage with young people have been immensely variable. Consequently, some young people have missed out on being informed about positive activities running nearby.

b) A standard template for this marketing strategy needs to be developed.

**Reason:** A marketing template would ensure that the strategy is sustainable. This would save duplication of work and reduce costs.

c) The responsible body needs to advise providers of positive activities and/or their promoters to explore the potential of all available lines of communication relevant to both young people and their parents, such as the internet and school newsletters. Furthermore, it must be ensured that access to this information is consistent.

**Reason:** The Government Paper *Youth Matters* highlights the necessity of this, and many young people find out about youth focused events through social networking sites. Internet promotion can be cheaper, quicker and easy to amend, allowing for more flexibility than other forms of promotion. In the summer holidays when young people's face-to-face encounters may be less frequent, the internet becomes an alternative method of information distribution to word-of-mouth. Some agencies are already using the internet as one method of communication and promotion.

d) It needs to be ensured that positive activities are marketed in a manner that appeals to and engages young people. Providers and/or their promoters need to be advised and supported in this process.

**Reason:** 'Tired of hanging Around' notes the success which re-branding an organisation or provider has on engaging new and hard-to-reach young people.

**Responsible bodies:** IYSS and NDCT to oversee, and decide which agency is responsible for the co-ordination of marketing. The extended service co-ordinators may prove to be the individual with the capacity and connections to collate this information and distribute it within their learning community.

### **Detailed consultation:**

a) **Recommendation:** Consultation needs to be carried out with the target group of young people regarding preferred activities, affordable cost and preferred times. This should be carried out in youth crime hotspots, before a provider is commissioned or an activity organised.

**Reason:** Activities need to be attractive and fit around the lifestyle of the young person in order to ensure attendance. Provision and youth crime are not inversely correlated, which suggests that often the current provision is not appealing to the at-risk young people. In addition, involving young people in consultation may help prevent them from feeling marginalised and venting their frustration in negative ways.

b) Parents and young people should be consulted regarding the media they use or encounter.

**Reason:** For maximum impact, marketing needs to be structured around the lifestyles of the target audience.

c) Consultation should be as early as possible, ideally 12 weeks before the commencement date of the project, and should seek to involve young people in project planning.

**Reason:** Thorough and creative consultation is time-consuming. Project planning is a positive activity in itself, and early involvement provides young people with a sense of responsibility. The Youth Matters paper stresses the necessity of balancing reward with responsibility.

**Responsible bodies:** Implemented by relevant agencies such as Housing Agencies or providers of positive activities, with the IYSS overseeing the consultation process.

### **Free or Low cost provision**

a) **Recommendation:** It needs to be ensured that there is some provision which is free, low-cost or for which subsidised places are available, for young people, particularly for those living in areas in IMD bands 1-3.

**Reason:** The majority of young offenders live in areas ranked 1-3 on the Index of Multiple Deprivation (IMD) scale. In addition, young people are more likely to drop-in and try out free activities, which they might be willing and able to pay for in the long run.

**Responsible bodies:** NDCT and the IYSS to oversee, including ensuring providers are informed about and access funding streams which would enable them to provide subsidised or free places.

### **Risky Activities**

a) **Recommendation:** Request and support providers to run some risky-activities, in order to engage young people in activities that encourage risk-management rather than risk-evasion. For example, outdoor pursuits, water sports or high-ropes.

**Reason:** Young people need exciting activities that teach them to manage risk (see In addition, the PEDPASS consultation found that children and young people place

Water Sports and Outdoor Adventure Activities in the top three activities they would like to do. 60% of those who don't participate in any out-of-school sport placed Water Sports as the activity they would most like to do.

**Responsible bodies:** IYSS to advise the providers who run activities that seek to tackle youth crime. If the IYSS or other agencies are looking to commission or fund a project, this should be taken into account.

### **Weekend and evening opening hours**

a) **Recommendation:** Request that groups already working with young people adapt their opening hours to the lifestyles of the target group.

**Reason:** There is less risk of duplication and fewer resources involved in extending the margins of a pre-existing facility or provider in comparison to creating a new source of provision.

b) **Recommendation:** In particular, providers should be advised and supported to open at the weekend, during the evening and in school holidays.

**Reason:** There is a drop in some types of provision at the weekends, particularly non-membership provision such as youth clubs or the NDDC and TDC sports programmes. There is an increase in youth crime and YASB on non-school days. Disproportionately high levels of youth crime are committed between 6 pm-12 am.

**Responsible bodies:** NDCT to oversee and work with Early Year and Childcare Service (EYCS) to negotiate the timing of activities with providers such as the youth service, extended services co-ordinators, and PLAY providers.

### **Activity Providers to join the VCR**

a) **Recommendation:** It is recommended that the providers of positive activities join the VCR.

**Reason:** Parents that accrue working tax credits can use them to cover up-to 80% of the cost of activities provided by agencies on the VCR. This reduction of cost to the parent may help to increase the number of children able to engage in positive activities.

**Responsible bodies:** NDCT to oversee, perhaps asking the EYCS district co-ordinators to contact providers and facilitate the process.

### **Targeted mobile provision to tackle youth crime and YASB**

a) **Recommendation:** The responsible body needs to ensure that the current level of targeted engagement and the capacity of the organisations that engage with those at-risk of offending is maintained or increased. If the capacity is reduced an impact assessment needs to be written.

**Reason:** CASP and YISP, the two agencies that are mobile and work to provide positive activities and one-to-one support for referred, at-risk young people right across Northern Devon, both have waiting lists.

In some areas, particularly outside of Bideford, Ilfracombe and parts of Barnstaple, there is little in the way of targeted, intensive and flexible support for top-end, at-risk young people that have not yet offended.

Some agencies, such as the youth service, feel they do not have the time, resources or expertise to deal effectively with the top-end, at-risk young people.

The number of FTEs outside of Barnstaple, Bideford and Ilfracombe is often fairly low, and therefore, a permanent and location specific form of support could not be justified and would not be sustainable.

**Responsible bodies:** The IYSS to ensure that funding bodies are aware of the necessity of these services and advise commissioning bodies of their importance.

## **Geographically Specific Recommendations**

### **Recommendations for High Priority areas**

The high priority wards are Bideford South, Central Barnstaple, Forches and Whiddon Valley, Ilfracombe Central and Yeo Valley.

Continuation of the current level of provision, and monitoring the planned provision in Barnstaple

a) **Recommendation:** The current level of provision in Barnstaple, including that which Barnstaple Youth Service, GOYA and Forches Community Association provides, should be continued.

**Reason:** Barnstaple Central, Forches and Whiddon Valley and Yeo Valley are youth crime hotspots. Therefore, the provision in place in these areas is necessary. The distribution of the free school-meals money (see below) will bolster the amount of provision accessible to those who may have had difficulty accessing provision in the past.

b) **Recommendation:** In 2009 in Barnstaple Learning Community, £300 will be available to each child eligible for free school-meals to spend on Extended Service activities. It is recommended that this project is monitored to establish whether this method is successful in reducing youth crime and YASB. The current levels of youth crime in Barnstaple should be compared to the levels in 2010 to establish this, although it should be taken into account that this preventative method may take three of four years for the benefits to be seen.

**Reason:** If this method of increasing opportunities to participate in positive activities can be proven to be successful in reducing youth crime, then it may be able to gain extra funding and be rolled-out in youth crime hotspots.

**Responsible bodies:** Dion Sears, extended Services Co-ordinator for Barnstaple Learning Community, to audit this pilot project and report to the IYSS.

## Summer Holiday Provision for 8-12s in Bideford

a) **Recommendation:** Where possible the NDCT and the IYSS should advise, commission or support agencies and providers to ensure that aspiration raising, sustainable, positive activities are operating and accessible during the summer holidays in Bideford South, Pynes Area, and preferably with outreach to Northam and Bideford East.

**Reason:** To implement Priority Action A32 of the Northern Devon Joint Sustainable Community Strategy, which is to 'sponsor work to reduce first time entrants to the Youth Justice System and improve outcomes for all young people locally' (p.14). Bideford South, Northam and Bideford East are youth crime hotspots and there were a comparatively high number of FTEs in the 10-13 age bracket in the Bideford South Ward in 2007 and 2008.

In these areas there is little *affordable*, non-membership provision for primary school-aged children available locally, particularly during the summer holidays.

Clive Cotton's report found there were proportionately more FTEs in the 10-13 age bracket than the 14-17 age bracket in deprived areas compared with more affluent, well-provided for areas. Consequently, provision aimed at reducing FTEs aged 10-13 needs to be low-cost.

b) **Recommendation:** It is necessary that the provider of the positive activity works actively to engage with at-risk 8-12s whilst remaining open to all. This may involve identification and direct invitation of at-risk young people in addition to promotion. The responsible body should oversee this and advise on potential methods of identification and methods of engagement.

**Reason:** at-risk young people, and the parents of at-risk young people, may need additional encouragement to ensure they take advantage of opportunities for positive activities. In the past, the differing methods of identification and engagement of at-risk young people have had varying levels of success.

c) **Recommendation:** The IYSS and NDCT should ensure the provider of positive activities has a contingency plan in place, so that a young person can continue participating in positive activities. Local clubs or coaches/workers from local clubs could be asked to help run activities, in order that the young person had the opportunity to continue their positive activity.

**Reason:** Long-term involvement in constructive activities is more likely to have a positive effect on behaviour, and therefore on youth crime, than short-term bursts of participation. The NDDC Super Sports programme found that 52% of young people continued playing the sport which they had tried-out during the summer. Referring young people onto existing clubs is more sustainable than expecting funding and resources for summer holiday activities to be extended to cover the whole year. Even in deprived areas, the proportion of FTEs under 12 years old is

significantly lower than the number of FTEs aged 13 and over. Therefore, in order to be successful in reducing levels of youth crime, provision that targets 8-12s must aim to be formative of positive behavioural patterns, rather than merely seeking to divert young people away from negative behaviour.

**Example 1:** Subsidising the places of 8-12s in Pynes Lane and Bowden Green area (Bideford South ward) and inviting them to some of the TDC run activities at Bideford College. Children could be sign-posted and, where necessary, supported to a join local club at the end of the summer holidays.

**Example 2:** Support and advise Extended Service co-ordinators and/or School Sports co-ordinators to enable them to run a programme of activities in Pynes Lane, Bowden Green with outreach sessions in Northam and Bideford East. Alternatively, commission CASP, forest schools, GOYA, play-workers or coaches to run a programme. For example, these could be play projects or fun-days held in the targeted area, which make the most of readily available resources, and encourage independent, self-initiated play.

**Responsible bodies:** The NDCT to decide on method of identification of vulnerable young people. The NDCT to inform the Extended Schools Co-ordinator for Bideford of this identification method. The NDCT to advise the Extended Services Co-ordinator on the need for provision in Bideford South. The NDCT to request that the Extended Services Co-ordinator will ensure that promotional material and/or invites are received by the households of at-risk young people. The agency or individual identifying the young person, i.e. the school/teacher or social services/ the social worker, could carry out this invitation.

**A table showing some providers of activities and approximate costs.**

Provider	Activity	Approximate Cost
Bideford Bouncers	Trampolining	£5.50 per place, per class
Can Play	Childcare, play	£18 per day
CASP	Play	3 hour session approximately £127 not including mileage
Extended Services	Activities at local clubs and schools in the summer and year round in schools.	Available in May for summer holiday activities
GOYA	A youth inclusion programme including football, mentoring.	£185, 000 for 50 places, £165, 000 for 30 places per annum
Seize the moment	Youth work and art-based workshops	4 workshops for 3 hours, approx.

		£200
Tae Kwon Do	Martial Arts	£30 per place per month
Torrige District Council	Holiday sports and/or arts activities	£6-25 per place per session
Vikki Braddick Dance	Dance classes	£3 per place per session

### Further investigation into, and providing of, intervention activities for 8-18s in Bideford South

a) **Recommendation:** The responsible body should ensure that consultation regarding preferred positive activities and current levels of engagement in positive activities with at-risk 13-18 year olds in Pynes Lane and Bowden Green is undertaken. In addition, a detailed case study, which is sensitive to the particularities of the area and its population, is required to identify specific problems.

**Reason:** Despite two youth clubs in walking distance and some membership clubs open to 12-16s, Pynes Lane and Bowden Green are youth crime hotspots. More local, qualitative information is needed in order to respond to this problem.

b) **Recommendation:** In response to consultation and research, targeted provision for 8-18 year olds which tackles YASB and youth crime needs to be put in place. This could take the form of a Youth Inclusion Programme (YIP) or a Family Inclusion Programme (FIP). The responsible body should advise or support the relevant agencies to implement this.

**Reason:** to respond to the high-levels of youth crime and YASB. The highest proportions of FTEs are aged 15 and 16 respectively, consequently it is important to engage with and provide support to this age group and divert them from negative behaviour. The YIP that GOYA runs in Yeo Valley and Forches and Whiddon Valley wards has been successful in reducing FTEs, and the suitability of replicating this programme in Pynes Lane and Bowden Green should be considered.

*A table showing some providers of activities and approximate costs.*

Provider	Activity	Approximate Cost
Devon Youth Service	Detached youth work/youth club	£5200 a year/£100 per session (staff cost only)
Extended Services	Activities at local clubs in the summer and year round in the secondary school.	Available in May for summer holiday activities
GOYA	Football, mentoring,	£185, 000 for 50 places, £165, 000

		for 30 places per annum
Kids Club	Play	£3 per place per session
Seize-the-moment	Youth work and art-based workshops	4 workshops for 3 hours, approx. £200
Tae Kwon Do	Martial Arts	£30 per place per month
Torridge District Council	Holiday sports and/or arts activities	£6-25 per place per session
Vikki Braddick Dance	Dance classes	£3 per place per session
WINGS	Detached youth work/youth club, multi-sports.	Currently no staff capacity

**Responsible Bodies:** The IYSS to identify and contact an agency willing and able to carry out this research and consultation on their behalf. Potential agencies include Tarka Homes (who are currently consulting with young people in Bideford), the Youth Service, WINGS, Safer North Devon, Devon and Cornwall Police and TDC. Potential providers of provision could include WINGS (they will be running the UNO project in Bideford, see p.14), the Youth Service or GOYA (possibly running a satellite programme). These providers might benefit from working in partnership with each other and with the local police force, fire service, the schools and Tarka Housing.

For summer 2009, £5000 of funding from Extended Services and Early Years and Childcare has been allocated to provide low cost holiday activities to this age group in Bideford South.

### **Summer Holiday Provision for 8-12s in Ilfracombe**

a) **Recommendation:** The responsible body needs to ensure that aspiration raising, sustainable positive activities are operating and accessible during the summer holidays in Ilfracombe Central Ward and with outreach to Ilfracombe West.

**Reason:** Tackling ASB is a local priority according to parish plan, and Ilfracombe Central is a youth crime hotspot. Three services work with secondary school aged children, but there is little non-membership or non-specialised clubs for primary school-aged children in Ilfracombe Central and West.

Brookdale Church's youth club nights for 7-9 year olds and 10-12 year olds are very popular and are based in Ilfracombe Central Ward. However, they only run one night a week during term-time. Last year Ilfracombe Family Centre ran some successful fun-days, which engaged with disadvantaged young people, and it is important to build on the success of these and ensure they continue in future years.

b) **Recommendation:** It is necessary that the responsible body ensures that the provider of the positive activity works actively to engage with at-risk 8-12s whilst remaining open to all.

**Reason:** see 7.7b.

c) **Recommendation:** The responsible body should ensure the provider of positive activities has a contingency plan in place, so that a young person can continue participating in positive activities.

**Reason:** see 7.7c.

*A table showing some providers of activities and approximate costs*

Provider	Activity	Approximate Cost
CASP	Play	3 hour session approximately £127 not including mileage
Extended Services	Activities at local clubs and schools in the summer and year round in schools.	Some free or 50p and above per place per session.
The Family Centre	Play, multi-sports,	£6350 16 days of provision, no max. capacity
GOYA	Football, mentoring	£185, 000 for 50 places, £165, 000 for 30 places per annum
The Landmark	Drama, dance, arts	£3 per place per session, £25 per place for workshops
Local Clubs	Athletics, Badminton, Football, Martial arts, Table Tennis (see appendix E, pp.43-49)	From £1.50 -£4 per session, or £12 and over per annum
Seize-the-moment	Youth work and art-based workshops	4 workshops for 3 hours, approx. £200
Super Sports	Various sports	£16-30 per session

**Responsible bodies:** The NDCT to decide on the method of identification of vulnerable young people. The NDCT to inform the Extended Schools Co-ordinator for Ilfracombe of this identification method.

The NDCT to advise the Extended Services Co-ordinator and the Ilfracombe Family Centre on the need for provision in Ilfracombe Central. The NDCT to request that the Extended Services Co-ordinator and/or the Family Centre ensures that promotional material and/or invites are received by the households of at-risk young people. The agency or individual identifying the young person, i.e. the school/teacher or social services/ the social worker, could carry out this invitation.

For summer 2009, £5000 of funding from Extended Services and Early Years and Childcare has been allocated to provide low cost holiday activities to this age group in Ilfracombe central.

### **Targeted activities for 12-18s in Ilfracombe Central and Ilfracombe West**

a) **Recommendation:** Increased targeting of provision in Ilfracombe Central and Ilfracombe West for 13-18 year olds through early intervention and identification of young people showing signs of negative behaviour.

**Reason:** Ilfracombe Central had the most young people being put on or moving up the escalation process between 2007 and 2008, and Ilfracombe West had the highest number of FTEs in 2008. Therefore, preventative measures are needed in Ilfracombe. Young Devon, the Youth Service and Transform work to provide support for young people, and two of these agencies often work with referred young people. In addition, the Landmark has free and subsidised places at their workshops available to agencies wishing to refer young people. However, recently the number of young people being identified using the Common Assessment Framework (CAF) and referred on to support has dropped significantly. Therefore, the number of individuals receiving support *early on*, including access to positive activities, is reduced. As appendix D shows, there is a considerable amount of provision in Ilfracombe Central, and there are two good sports clubs in Ilfracombe West (although no youth club). Consequently, re-distribution is not necessarily the answer to the problem; rather, it is important to concentrate on getting the right people the support and provision they need.

**Responsible bodies:** The recently re-established Ilfracombe Multi Agency Group should help to promote early identification of young people in need of support, and make the referral path clear to frontline agencies. In addition, the meeting should allow for increased communication and knowledge between agencies looking to refer young people, and potential providers of activities and/or support, for example local sports clubs and the Landmark Theatre. However, if not, and the number of young people being identified and receiving support continues to fall, the IYSS should ensure that an AXS pathways co-ordinator is re-appointed in Ilfracombe, or frontline staff receive additional support through some other method. The IYSS are responsible for ensuring information regarding the number of young people being referred and receiving support is reported to them.

## **Recommendations for Lower Priority Areas**

The lower priority wards are Bideford East, Ilfracombe West, Newport, Northam, Pilton, South Molton and Torrington. Some of these wards have been discussed in the above recommendations because of their proximity to high priority wards.

### **Universal Provision for Newport**

a) **Recommendation:** It is recommended that the responsible body commissions providers or advises that providers carry out youth engagement work and positive activities at Rock Park Skate-park in Newport during the summer holidays, influencing the spread of resources where possible or necessary. Where there is already the intention for a project based at the skate-park, the responsible body or relevant agency should communicate with and support the project leader, or enhance the planned activity. Providers include Extended Services co-ordinators, the youth service, Forches Community Association, Grosvenor Church, PLAY, NDDC Super Sports and local organisations (for a full list of potential providers, see appendix D pp.6-19).

**Reason:** Newport is a youth crime hotspot and the Parish Plan indicates a negative perception of youth presence. There is no secular youth club and the majority of provision in the area is formal, membership clubs based in the school. Although Forches Community Association is close-by, many people that work with young people stress that young people are 'tribal', and are unwilling to travel far from their homes because of feelings of insecurity. The new skate park opens-up new opportunities for positive activities and youth engagement work.

**Responsible Bodies:** The lead youth worker for Forches Community Association has expressed an intention to eventually extend the area of work to include parts of Newport, including Rock Park. The IYSS should contact Sarah Snowden who is overseeing the project to express their support for this and ensure it happens. Detached youth work is mobile and takes advantage of opportunities as they arise to engage with young people on the streets or in parks. The detached youth work could coincide with a skating taster day, such as that which NDDC is trying to organise and fund. The detached youth work could be undertaken with the long-term and more sustainable aim of integrating some young people into a youth club run by one of the groups.

### **Provision for young people in South Molton:**

a) **Recommendation:** The responsible body needs to ensure that there is sufficient provision in South Molton for 8-18 year olds. This could be achieved by directly commissioning providers, asking/recommending providers to run activities in South Molton, influencing the spread of resources and requesting that services that engage with young people prioritise organising summer holiday activities. Providers include Extended Services co-ordinators, the youth service, PLAY, NDDC and local organisations (for a full list of potential providers, see appendix D pp.47-51).

**Reason:** South Molton is a youth crime hotspot. The newly appointed and part-time extended service co-ordinator will have had little time to organise a summer

programme. Super Sport is not planning on running any activities in South Molton in summer 2009, though they have expressed willingness to if a need is identified. The PLAY schemes have not expressed an intention of running activities in South Molton. Consequently, there will be a fairly low-level of non-membership provision for 8-18 year olds in South Molton in the 2009 summer holidays.

b) **Recommendation:** The responsible body should consider advising the provider to organise some cultural, non-sports based provision.

**Reason:** There is no museum or theatre, and therefore there is little non-sports based provision except that which the youth service provides, and currently the youth service has no building to use.

**Responsible bodies:** NDCT to oversee. NDCT to support and advise the extended service co-ordinator about levels and types of provision and, if judged necessary, to request that NDDC run some activities in South Molton, upon which places could be subsidised. NDCT should request that Seize-the-Moment carry out some PLAY activities in South Molton, perhaps in the final two-weeks of the summer holiday when the Youth Service closes.

#### **Provision for Pilton**

a) **Recommendation:** It is recommended that the responsible body supports and/or encourage initiatives for universal provision in Pilton during the summer holidays for 8-18 year olds, and ensures that information regarding nearby clubs is well promoted.

**Reason:** Pilton is a youth crime hotspot. There is no youth club in Pilton, although Georgie's is within walking distance for many residents of the ward. There are some locally based uniformed and sports clubs.

#### **Responsible bodies**

NDCT needs to ensure that the local schools, the youth service, the local police force and other agencies in Pilton that encounter young people are knowledgeable about local membership clubs and signpost to these clubs where appropriate. This could be done through asking the extended schools co-ordinators or school-sports co-ordinators to disseminate information regarding provision to key agencies or directing these agencies to electronic databases.

## Part 2 Appendices (see embedded document)



"Appendices for  
Holiday Activities Rep